

TAKE YOUR DAUGHTER TO THE CAPITOL DAY



As part of the Take Your Daughter to the Capitol Day initiative, we have compiled fun and interactive activities intended to increase the exposure of young girls and boys to opportunities of leadership and public service. Specifically, we hope that your children will learn about the legislative process, grow their interest in government, and feel empowered to consider careers in public service and elective office.

Studies show that young women are less likely than young men to consider a career in elective office and public service. We want to change this perspective and open the realm of possibilities for all children.

Through a grant from the Halliburton Foundation, we are able not only to inspire young girls to dream bigger through civic engagement but also to empower them to pursue those dreams. We hope you and your future leader enjoy the worksheets.

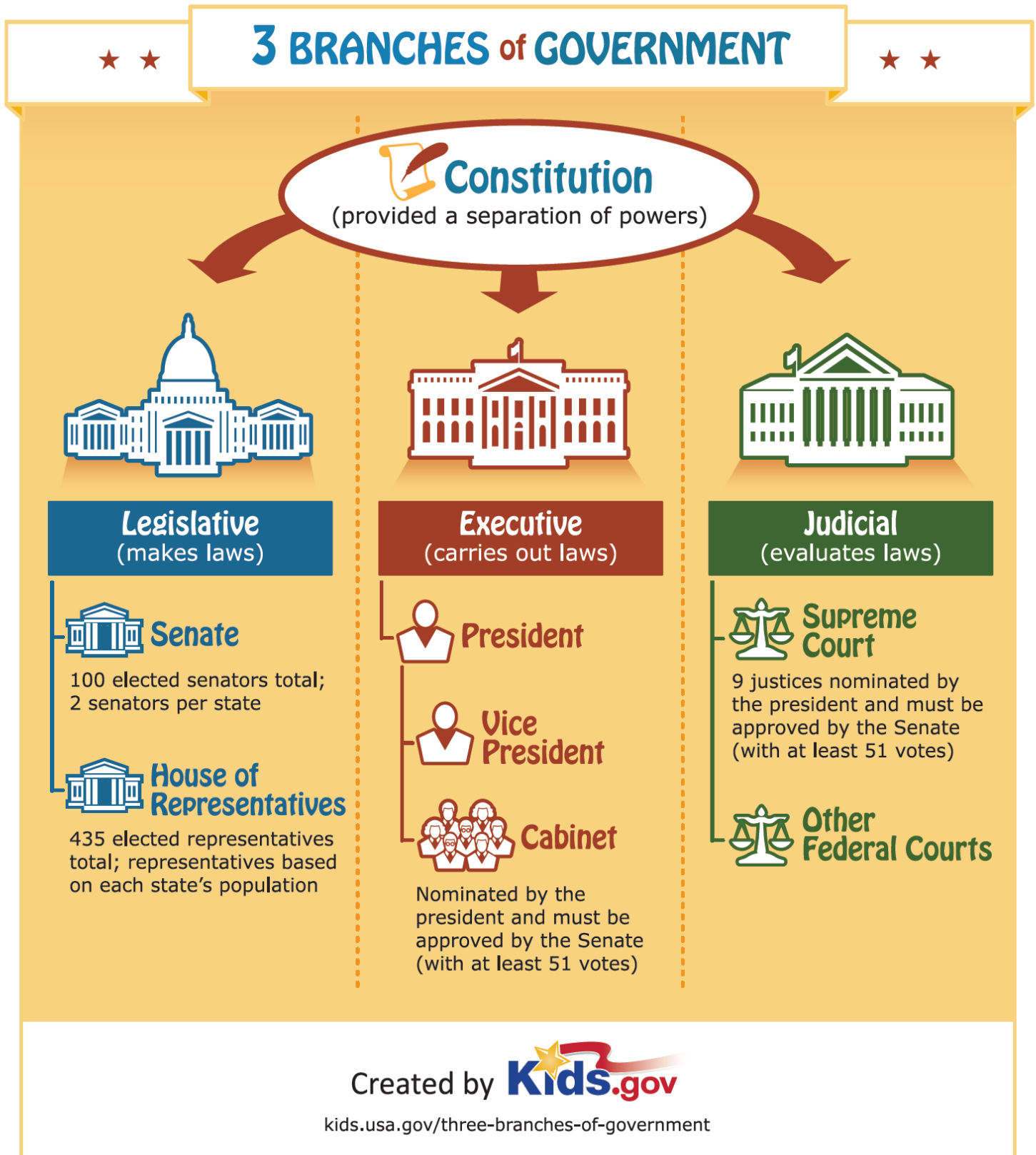


Women's Leadership Initiative
University of Oklahoma

HALLIBURTON



Our State Governments are modeled after our federal government in structure. States also have three branches: legislative, executive, and judicial.





Do you know your Oklahoma State leaders?

Use your state capitol legislative directory guide to answer the following questions about state leaders in Oklahoma! Fill in the blank with the letter that answers the questions below!

1. The Governor of Oklahoma is _____

- A. Bob Stoops B. T.W. Shannon
- C. Mary Fallin D. Noma Gurich

2. The Lieutenant Governor of Oklahoma is _____

- A. Todd Lamb B. Janet Baressi
- C. Brian Bingman D. Pistol Pete

3. There are _____ members of the Oklahoma House of Representatives

- A. 600 B. 101
- C. 54 D. 200

4. There are _____ Women in the Oklahoma House of Representatives

- A. 74 B. 85
- C. 2 D. 16

5. There are _____ members of the Oklahoma Senate

- A. 24 B. 65
- C. 48 D. 92

6. There are _____ Women in the Oklahoma Senate

- A. 12 B. 29
- C. 4 D. 8





True or False?

Facts about the Oklahoma State Capitol and its leaders

Answer the questions below by circling “true” or “false.” If the answer is “false,” write the correct answer in the space provided. You can find the answers by touring the capitol, asking legislators and capitol staff members, or looking through your legislative member guide.

1. Mary Fallin is the third woman to be governor of Oklahoma

True False _____

2. There have been 18 women elected to the U.S. House of Representatives from Oklahoma

True False _____

3. The Lieutenant Governor’s office is located on the third floor of the Capitol

True False _____

4. Speaker Pro Tempore Brian Bingman’s office is located on the first floor of the capitol

True False _____

5. Rep. Elise Hall is the youngest person to serve in the Oklahoma legislature

True False _____

6. Oklahoma’s original constitution is located on the second floor of the state capitol

True False _____

7. The oil rig located South of the state Capitol building is still active today

True False _____

8. Two of the three Oklahoma Corporation Commissioners are women

True False _____

9. There are 13 members of the Oklahoma Supreme Court

True False _____

10. There are three women members of the Oklahoma Court of Criminal Appeals

True False _____

Capitol Art Scavenger Hunt

Visit the artwork on each floor of the Oklahoma State Capitol. Find the following historic Oklahomans and answer the questions about them in the space provided.

Kate Bernard

Why is she important?

Where is her statute and picture located at the capitol?



Carl Albert

Why is he important?

Where is his portrait located at the capitol?



Ada Lois Sipuel Fisher

Why is she important?

Where is her portrait located at the capitol?



“The Flight of Spirit” (The five historic ballerinas)

Why are they important?

Where is their portrait located at the capitol?



Capitol Art Scavenger Hunt

Can You Find:

Mrs. Lamar Looney

Why is she important?

Where is her portrait located at the capitol?



Rep. Bessie S. McColgin

Why is she important?

Where is her portrait located at the capitol?



The Oklahoma Constitution

Why is this document important?

Where is it located in the Capitol?



The Guardian

Why is it important?

Where is it located in the Capitol? (Hint: it is located in two places)



TIME TO COLOR!

The Oklahoma State Flag

The State flag features an Osage warrior's shield on a blue background. An olive branch and a calumet, or peace pipe, lay across the shield. Seven eagle feathers decorate the shield. Both of these items are symbols of peace. The design was officially adopted as Oklahoma's flag in 1925.

In 1941 the word "Oklahoma" was added beneath the shield. (Source: The Oklahoma History Center, <http://www.okhistory.org/kids/symbols>).

OKLAHOMA HISTORY



OSAGE SHIELD

Identifying Leadership



Secretary of Veteran
Affairs

These photos represent nine very important, trailblazing women leaders in Oklahoma's government. They have important roles and make key decisions that impact all Oklahomans. See if you can recognize them by drawing a line to match their faces with their names.



Oklahoma Court of
Criminal Appeals

Janet Barresi

Noma Gurich

Arlene Johnson

Yvonne Kauger

Vicki Miles- LaGrange

Patrice Douglas

Dana Murphy

Clancy Smith

Rita Aragon



Oklahoma Supreme
Court Justice



Oklahoma Supreme
Court Justice



Oklahoma Corporation
Commissioner



State Superintendent
of Public Instruction



Oklahoma Corporation
Commissioner



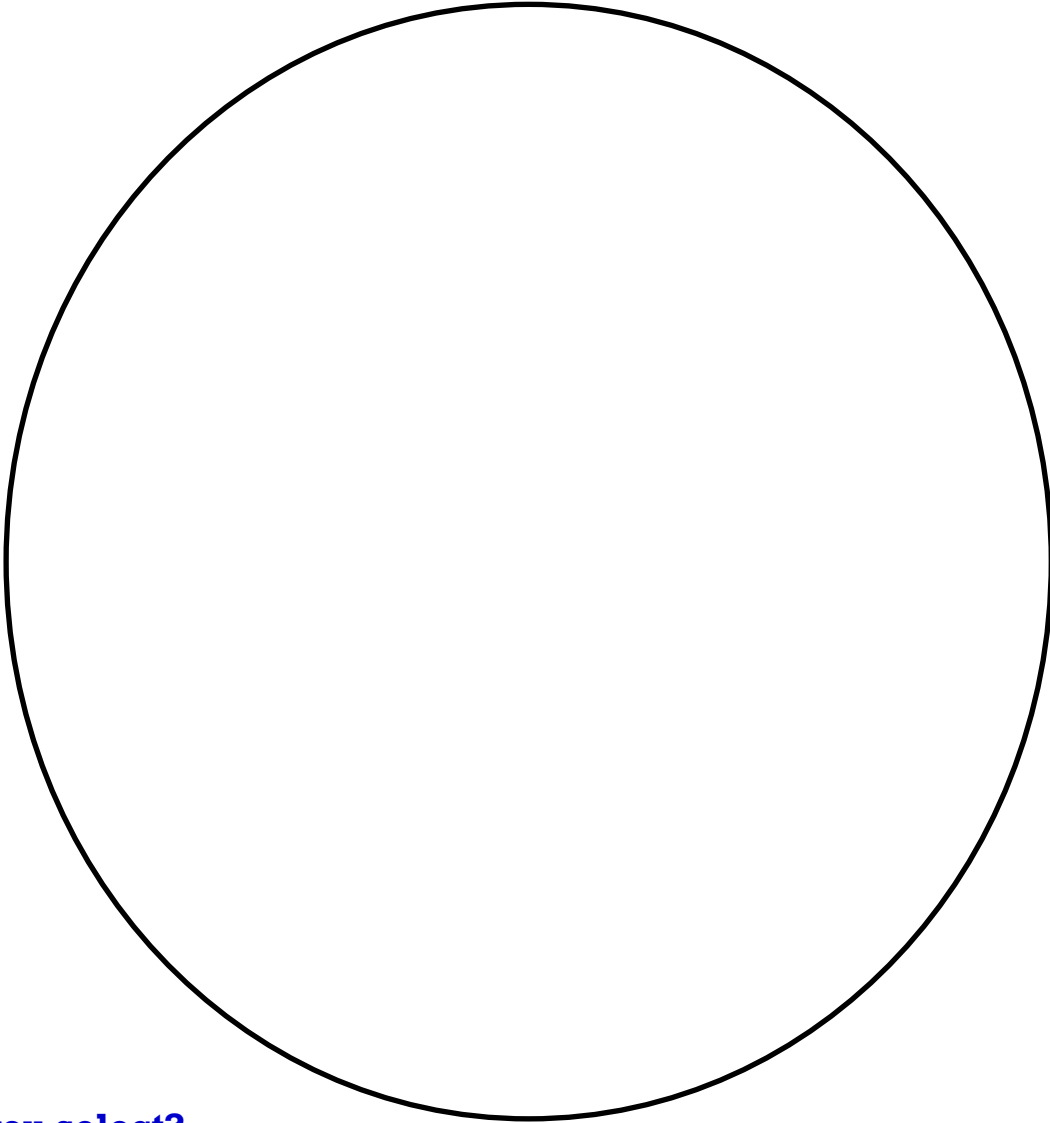
Oklahoma Court of
Criminal Appeals Judge



Chief U.S. District Judge for the
Western District of Oklahoma

My New Shero

*Think of a woman that you met or saw a picture of during your visit to the capitol.
Draw a picture of the woman that you found to be most interesting and inspiring.*



Who did you select?

What made her most interesting to you?

Picture Perfect Leadership

During your time visiting the capitol, has your parent, guardian, or chaperone taken pictures of you with any artwork or people that you found important or inspiring.

Answer the questions below and send 3 of your pictures/ responses to Lauren Schueler, Assistant Director at lschueler@ou.edu for the chance to be featured on the Women's Leadership Initiative website or social media pages!



I took a picture with _____

(This person/art work) inspired me because

I took a second picture with _____

(This person/art work) inspired me because

I took a third picture with _____

(This person/art work) inspired me because



Find out who your senator or representative is and take a photo with him/her. It is important to know the person that represents you at the capitol.

My senator is _____

My Representative is _____

Want to Know More?

For more about Art at the Capitol, visit the Oklahoma Arts Council website:

http://www.arts.ok.gov/Teaching_with_Capitol_Art.php

For information about the Oklahoma Legislature:

<http://www.oklegislature.gov/>

For information about the federal government:

<http://kids.usa.gov/grown-ups/index.shtml>

<http://www.whitehouse.gov/>

<http://beta.congress.gov/>

<http://cole.house.gov/resources/students#all>

For “Kid friendly” Career information, visit the United States Bureau of Labor:

<http://www.bls.gov/k12/>

For stories of Women who make a difference nationwide, visit the PBS “Makers” website:

<http://www.pbs.org/makers/home/>

For more statewide information, visit:

<http://www.okhistory.org/kids/index>

http://www.ok.gov/kids/Learn_About_Oklahoma/

For information about women in the Oklahoma legislature, visit the Oklahoma State University Oral History Project:

<http://www.library.okstate.edu/oralhistory/wotol/legislators.htm>

For information about the Oklahoma Women’s Hall of Fame, visit the Oklahoma Commission on the Status of Women:

<http://www.ok.gov/ocsw/>

For student friendly research resources, visit the U.S. Census Bureau:

<http://www.census.gov/schools/facts/index.html>

For family related resources and upcoming events information:

<http://www.metrofamilymagazine.com/>

<http://www.tulsakids.com/>

Women's Leadership Initiative

Educating, Inspiring, and Empowering women to become political leaders

The Appointments Project (TAP)

TAP encourages women to consider serving on public boards and commissions. A bipartisan effort, the committee gathers applications that are submitted to Governor Fallin for consideration.



Pipeline to Politics

This is a bipartisan and intense training targeted to women who are interested in running for elective office, working on a campaign, or being a community advocate.

Girls'Voices

WLI Partners with different organizations that serve middle school aged girls to help encourage them to discover and use their voices to positively impact their lives, schools, and communities.

Social Media

Facebook:
www.facebook.com/womensleadershipinitiative
Twitter: @W_L_I

N.E.W. Leadership

Since 2002, over 350 undergraduate women have participated in N.E.W. (National Education for Women's) Leadership from colleges and universities, tribal nations, and communities of all sizes throughout Oklahoma. N.E.W. Leadership involves five days of skill-building workshops, trainings, and opportunities for one-on-one and group interaction with established women involved in politics and public service.

Women's Leadership Initiative
Carl Albert Congressional Research & Studies Center
University of Oklahoma
630 Parrington Oval, Room 101
Norman, OK 73019
Phone: 405-325-4934

www.ou.edu/wli